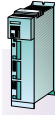


Compact and
chassis units



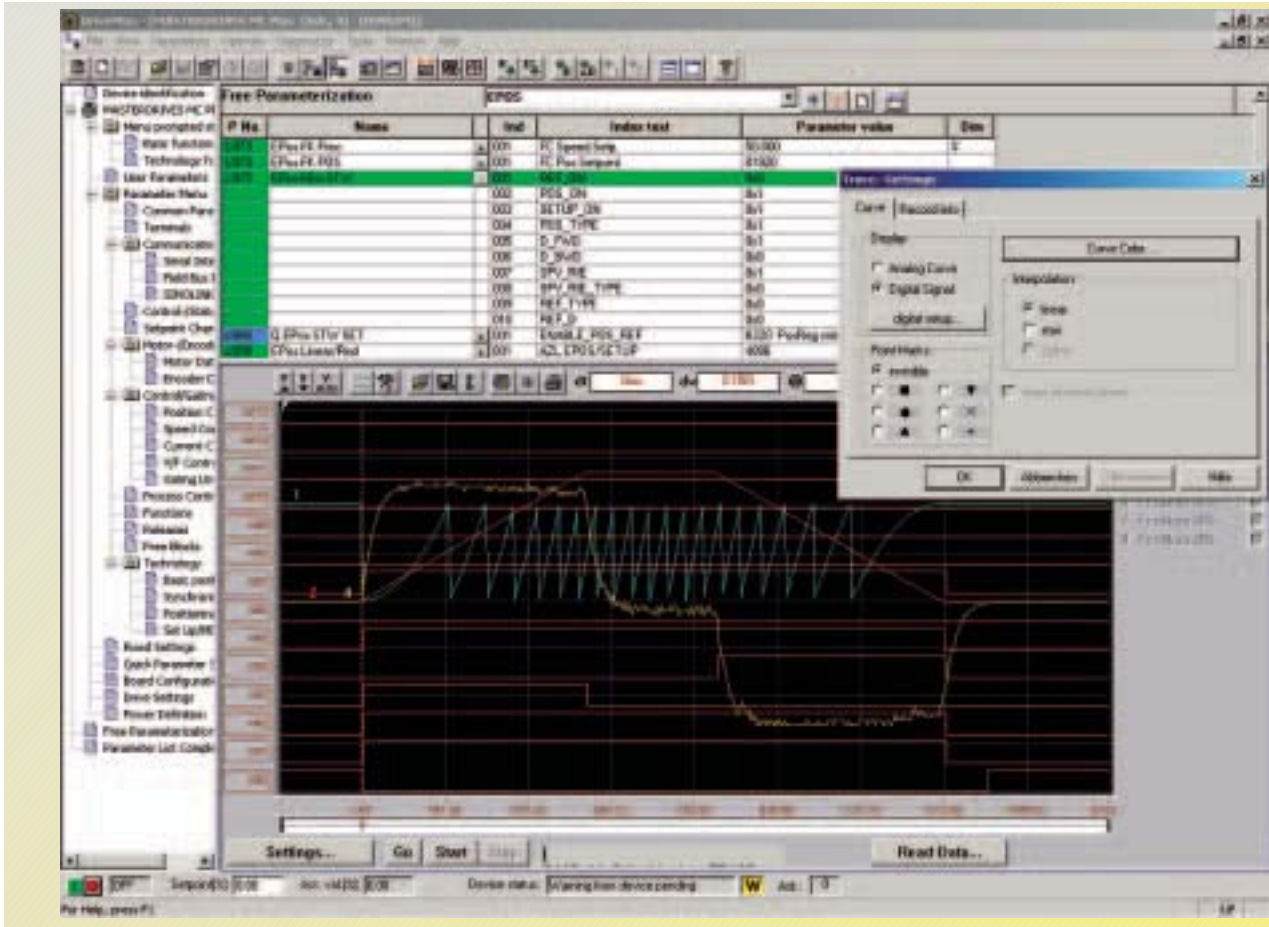
Compact
PLUS units

SIMOVERT MASTERDRIVES Motion Control

Engineering information

Operator control and visualization

Start-up, parameterization and diagnostics with DriveMonitor



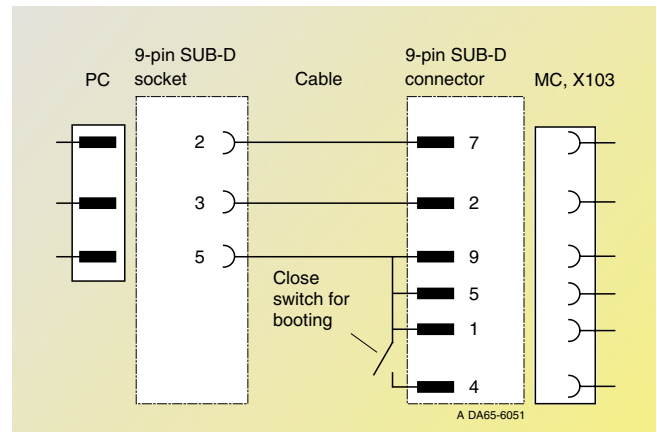
Trace function with DriveMonitor

DriveMonitor performance characteristics

- Setting and monitoring of all basic-unit parameters in tables, which can be individually created
- Reading, writing, managing, printing and comparison of parameter sets
- Handling of process data (control commands, setpoints)
- Diagnostics (faults, alarms, fault memory)
- Off-line and on-line operation
- Parameterization of the T100, T300 and T400 technology boards
- Graphic display of the trace-memory function for analysis purposes
- Menu-assisted parameterization during commissioning.

Hardware and software requirements

- PC with Pentium II or comparable processor
- Operating systems
 - Windows 98/ME or
 - Windows NT/2000/XP Professional
- Main memory of at least 32 MB RAM with Windows 98/ME, 64 MB RAM with Windows NT/2000/XP Professional
- CD-ROM drive (24 x)
- Screen resolution 800 x 600 or higher
- Free hard-disk memory of 200 MB for minimum requirements
- Recommended system requirements
 - Pentium II/500 MHz or higher
 - Main memory of 256 MB RAM



Combination cable for boot function and DriveMonitor

- Windows 98/ME/NT/2000/XP Professional
- CD-ROM drive (24 x)
- Screen resolution 800 x 600 or higher
- Free hard-disk memory of 500 MB

- For stand-alone operation (USS)
- RS232 serial interface (for one unit, point-to-point)
 - RS485 serial interface (for several units, bus operation), e.g. with the RS232/RS485 interface converter, SU1).