

Component	Valve manifold	
	Material	Mat. No.
Housing	X 2 CrNiMo 17 13 2	1.4404
Cone	X 6 CrNiMoTi 17 12 2	1.4571
Spindles	X 2 CrNiMo 18 10	1.4404
Head parts	X 5 CrNiMo 18 10	1.4401
Packings	PTFE	—

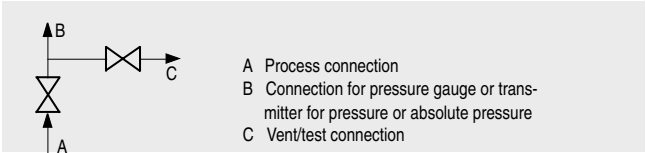


Fig. 1/106 Two-spindle valve manifold with rotatable sleeve, connections

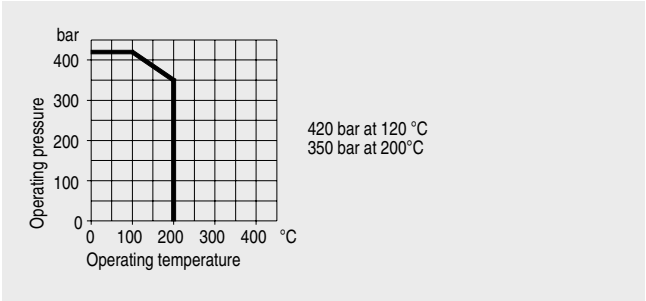


Fig. 1/107 Permissible operating pressure

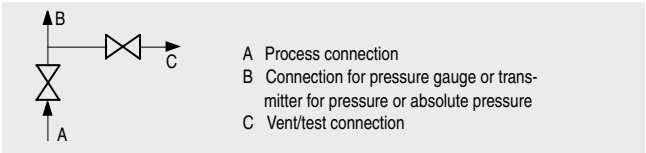


Fig. 1/108 Two-spindle valve manifold DN 5, connections

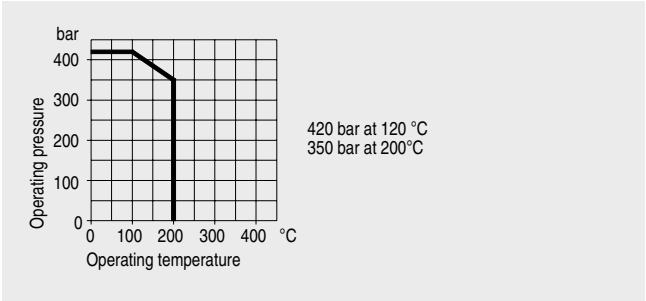
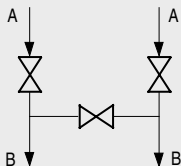
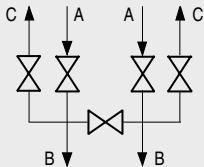


Fig. 1/109 Permissible operating pressure



A Process connection
B Transmitter connection

Fig. 1/112 Three-spindle valve manifold DN 5, connections



A Process connection
B Transmitter connection
C Vent/test connection

Fig. 1/113 Five-spindle valve manifold DN 5, connections